

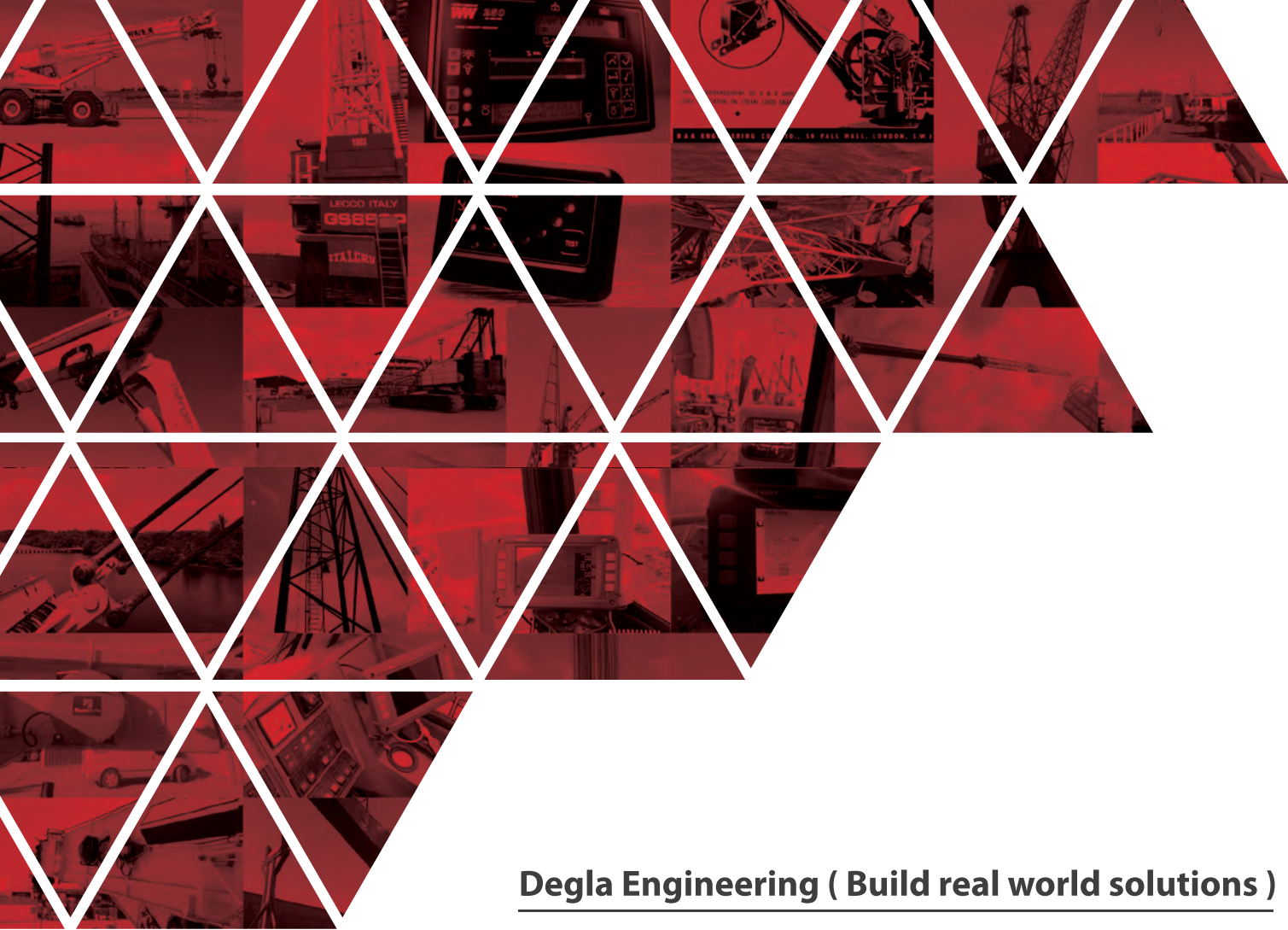


**Degla**  
Engineering  
Build real world solutions

**WWW.DEGLAENGINEERING.COM**



## **Company Profile**



## Degla Engineering ( Build real world solutions )

### **Our Mission :**

Degla Engineering is a leading nationwide equipment distributor dedicated to continuously improving our services and product offerings to meet the unique requirements of our customers. Partnering with leading manufacturers and our employees, Degla Engineering strives to be the number one solutions provider to the construction field, Petroleum sector, Safety solutions, and heavy industries equipment supplier and supporting after sales in addition to expand our coverage regionally and include new industrial segments. Through supplying high quality equipment, partnering with world leader companies and expanding worldwide, we ensure our clients' satisfaction.

### **Our Vision :**

To provide the most suitable equipment and solution to our customers.

By knowing the needs of our customers and through our highly trained, safe and mobile workforce, Degla Engineering will be the number one solutions provider in the heavy equipment industry and services.

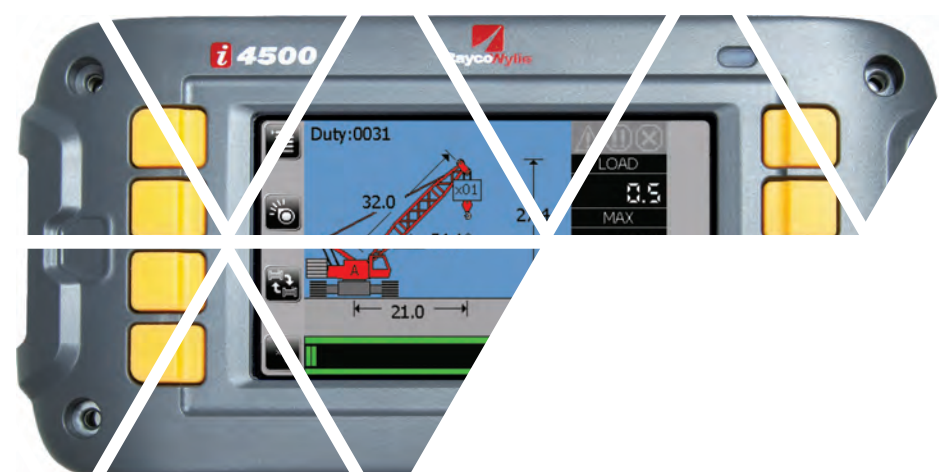
To be number one in the industries we serve requires continuous improvement to achieve benchmark reliability and sustainability. In addition to supplying equipment, we strive to remain customer orientated and provide solutions by having the right product range with a high life cycle value that can be customized to your needs and delivered in your time frame. Further, the ability to put together the right solution requires service delivered by the appropriate people who possess competent knowledge and skills.

Allow us to introduce ourselves to you, we are Degla Engineering Company, a leader company in the field of engineering services for heavy equipment and machines. We have an experienced team of engineers and technicians to cover all customers' needs with our partners.

<p><b>"RaycoWylie"</b> Load moment indicators for mobile, overhead, offshore cranes and forklifts.</p>	<p><b>"Syscomak"</b> Weighing system for heavy equipment.</p>
<p><b>"Comansa"</b> Tower cranes.</p>	<p><b>"MAIT"</b> Drilling machines and mobile cranes.</p>
<p><b>"Rusch"</b> Overhaul inspection, repair of cranes and offshore services.</p>	<p><b>"GPrandina"</b> Construction industry equipment.</p>
<p><b>"Machitech"</b> CNC Cutting Machines [Plasma - Fiber Laser - Router - Waterjet].</p>	<p><b>Supply of "Hypertherm"</b> Consumables for cutting machines.</p>
<p><b>"NED"</b> Generators.</p>	<p><b>"UNIC Cranes Europe"</b> Mini Crawler Cranes.</p>



Degla Engineering Company have the experience to offer complete service program for all equipment and we have our service crews to handle all service contracts for all heavy equipment and cutting machines



**RaycoWylie** **1**

RaycoWylie is a leading company in the field of load moment indicators, RaycoWylie are driven by innovation, with product and software development an unceasing priority. Whether designing or improving safety systems for a specific bespoke machine, fully integrated systems with leading manufacturers or focusing on refining the current technology ranges, our R&D engineers work constantly to help improve reliability, reduce cost, and incorporate developments in international standards.

**Products :**

Holistic safety systems for all categories of cranes, the current product range includes the W2245 and i4500 series of systems. At the heart of all the current systems are simple, intuitive controls and straight-forward, precise procedures to operate and calibrate systems. Integrating advances in technology, i4500 series also utilize USB connectivity to make the transfer of calibration files, load charts, software and more, easier than ever before. The complete range of systems is designed for practical use, without the need for specialist hardware or software, with calibration and operation performed through the display itself.

## Products :

- > i4500 Series
- > i4500 for Mobile Cranes
- > i4500 for Crawler Cranes
- > i4500 for Towers Cranes
- > i4300 - Rated Capacity Indicator
- > R180 - Wireless Wind Speed Indicator
- > R147 - Wireless Anti-Two Block Indicator
- > i4000 - Multipurpose Indicator Range Limiting Device
- > i4000 - Wireless Multipurpose Indicator
- > Load Links and Load Shackles
- > Sensors & Spares
- > Global Contacts





**MAIT**

**2**



For more than 60 years, MAIT has been a world leading manufacturer of drilling machinery and accessories for the foundation drilling industry. MAIT is recognized by contractors for offering the highest quality, reliability, service and simplicity.

MAIT manufactures a wide range of drilling machinery from large to small diameter drilling rigs in order to meet our customer's every need.

MAIT also produces other types of construction equipment for drilling water wells, cranes, micro-piles, jet grouting, quarrying, soil investigation and tunneling.

Furthermore MAIT is capable of providing various drilling tools like augers, buckets, core barrels, friction and interlocking Kelly bars and accessories such as casing oscillators, casing tubes, hydraulic grabs, hammers, vibrators, power packs and more.

MAIT products are renowned for the highest quality standards.

In fact, for many years, MAIT, has been quality certified ISO 9001-2000 from the RINA Institution.

# APPLICATIONS



## - CFA



## - DIAPHRAM WALL



## - DRIVEN PILES



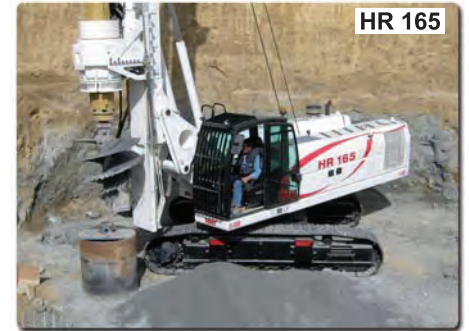


# SERIES

---

# MAIT

## - HR



## - MC



## - MINI



## Products :

- > Bored piles
- > CFA
- > Diaphragm
- > Driven piles
- > Lifting
- > Micropiles
- > Tunnels
- > Quarries
- > Water wells
- > Geothermal
- > Stabilization
- > Used equipment





**Comansa**

**3**

- One of the world's leading towercrane manufacturers.
- More than 20,000 tower cranes manufactured.
- Presence in more than 60 countries and 5 continents.
- Production capacity of up to 2,000 cranes per year.
- World wide developer of the Concept.

## Products :

The COMANSA CM is formed by three series of flat-top cranes and one of luffing-jib cranes.

Series	No. Of Models	Max. jib length	Max. Load
CM 1100	2	52.5 to 65 m 172.2 to 213.3 ft	6 and 8 tonnes 13,230 to 17,650 lbs
CM 1600	6	65 to 70 m 213.3 to 2297.7 ft	10 and 12 tonnes 22,050 to 25,460 lbs
CM 2100	7	70 to 80 m 242.8 to 262.5 ft	12 and 25 tonnes 26,460 to 55,120 lbs
CM (Luffers)	3	50 to 65 m 164 to 213.3 ft	12 and 18 tonnes 26,460 to 39,680 lbs

Six series of tower cranes, including Flat-Top and luffing-jib cranes, designed under the EN 14439 .

Series	No. Of Models	Max. jib length	Max. Load
LC 500	8	35 to 50 m 114.8 to 164 ft	4 and 5 tonnes 8,820 to 11,020 lbs
LC 1100	6	52.5 to 658 m 172.2 to 213.3 ft	5 and 8 tonnes 11,020 to 17,650 lbs
LC 1600	7	65 to 70 m 213.3 to 2297.7 ft	8 and 12 tonnes 17,640 to 26,460 lbs
LC 2100	13	74 to 84 m 242.8 to 275.6 ft	12 and 48 tonnes 26,460 to 105,820 lbs
LC 3000	7	60 to 80 m 196.9 to 262.5 ft	12 and 25 tonnes 26,460 to 55,120 lbs
LC (Luffers)	14	50 to 65 m 154 to 196.9 ft	8 and 64 tonnes 17,640 to 141,090 lbs





**Rusch**

**4**

## **Rusch Crane Repair**

Rusch Crane Repair has built up a worldwide reputation thanks to the technique of repairing crane booms (the telescope as well as the framework) high quality types of steel even in the high-tension areas to a value equal to the original boom.

Since manufacturers only supply new parts, sometimes this can bring about a big savings. After the reparation, the CE-testing of the crane is still valid and Rusch gives a guarantee on the reparation.

## **Mast Inspection**

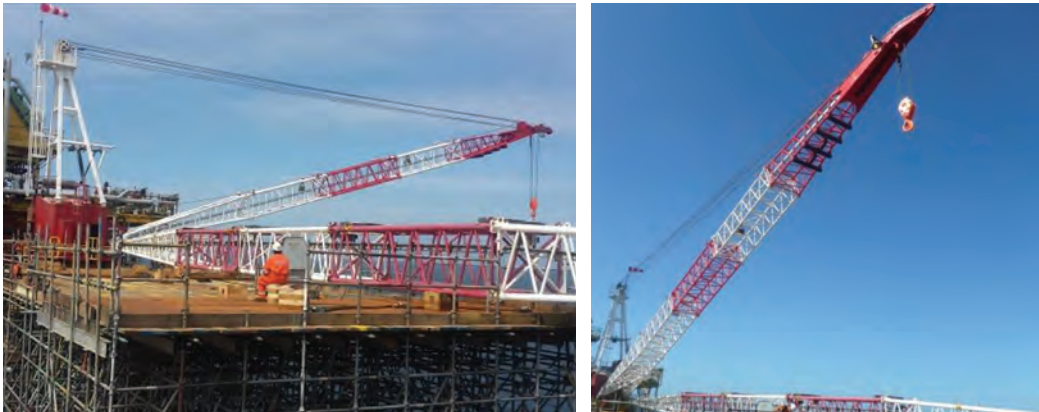
Rusch is an expert in carrying out periodic mast inspections. Telescopic masts are completely dismantled by Rusch Crane Repair. Welding, bearings, cylinders, pulleys and cables undergo thorough inspection.

## Rusch Offshore Services

---

Rusch Offshore Services is one of the few independent maintenance and service companies for offshore cranes. The inspection and modification of offshore cranes, such as those that are used on drilling platforms and production platforms on the continental shelf, is routine work. Rusch has a team of qualified technicians that are available with their specialist equipment 24 hours a day, seven days a week.

Rusch operates over the whole world and our highly specialized staff can be flown in to carry out tests, inspecting and repairing the most diverse technical failures and reparations.





**Machitech**

**5**

Machitech Automation is an innovative manufacturer of custom automated cutting solutions for the steel industry. Building its reputation on complete customer satisfaction, Machitech Automation is known for its ability to adapt custom systems to their customer's requirements. Working closely with customers and their requests allows Machitech to continue to develop and improve above and beyond the standards of the industry.

### **Products :**

- > Silver Cut
- > Diamond Cut
- > Platinum Cut
- > Titanium Cut
- > Pipe Cut
- > Beam Cut
- > Routers
- > Water Jet
- > Metal Working tools & Equipment
- > Fiber Lazer



**SILVER CUT**

**DIAMOND CUT**



**PLATINUM CUT**

**TITANIUM CUT**





# General Features :

## SILVER CUT



**ENTRY LEVEL PRICE,  
INDUSTRIAL QUALITY**

Ideal for small to medium fabrication and HVAC shops, this cutting table uses industrial quality components for long term durability.  
can be converted from waterbed to downdraft.  
automatic torch height controller.  
Unitized design

## DIAMOND CUT



**ACCURACY AND  
PRODUCTIVITY**

Specially designed for high precision cutting on a heavy unitized frame that can be increased in size as your needs grow.  
innovative inverse rail system.  
Exceptional accuracy and cut quality.  
Many option available

## PLATINUM CUT



**HEAVY PLATE CUTTING**

For the heavy steel industry, plate cutting facilities and structural steel fabricators, the platinum cut is a large formay cutting machine.  
Can be increased in size as your needs grow.  
Many options available

## TITANIUM CUT



**PLATE PROCESSING  
MACINE**

The strength of the dual beam steel gantries allow widths up to 20°.  
Optional 30HP drilling station and tool changer.  
Can be increased in size as your needs grow.  
Many options available to customize

### About Beam Cut Systems

Beam Cut is versatile robotic cutting system designed for the structural steel and manufacturing industries.

Beam Cut Systems was founded by a joint partnership between group CFR and Machitech Automation

## WATER JET

### VERSATILITY, UNITIZED SYSTEM

Features :

- Specially designed for high precision cutting on a heavy unitized frame that can be increased in size as the customer's needs grow.
- Innovative inverse rail system.
- Bellows protection.
- Exceptional accuracy and cut quality.



## ROUTERS

### THE BEST CUTTING AND MACHINING OF NON FERROUS MATERIALS

Features :

- Can machine wood, plastic and aluminum.
- Equipped with a 10HP spindle, 8 stations automatic tool changer and many other features.
- Custom table dimensions available.





**HYDRA**

**6**

HYDRA business is linked to the design and construction of machines and equipments for drilling, with variable models in dimensions and performances to fit working areas in which they have to be used.

Hydra builds its machines in a new site which is spread over an area of 11.000 square meters, complete with warehouse of raw materials, spare parts, production's workshop and offices (technical and commercial).

Recently a new company has been started up for the rental of machines and equipments produced.

The passion for the mechanics and the work experience gained in this field allow us to be positive, dynamic in deliveries and flexible for the ability to customize models in the catalogue.

### **SOLAR machines :**

- > JOY 1 SOLAR
- > JOY 2 SOLAR
- > SETYS SOLAR

## Drilling machines :

- > JOY 1 Geo
- > JOY 2 Geo
- > JOY 3 Geo
- > JOY 4 Geo
- > Geo Easy

- > JOY 1 Geo
- > JOY 2 Geo
- > JOY 3 Geo
- > JOY 4 Geo Geo
- > Easy

## Drilling slides :

- > SL 150
- > SL 200
- > SL 400-SL 400/2
- > SL 600

The promise of world-class manufacturing extends to the Hypertherm Technical Training Institute, a multi-million dollar training facility that addresses the need for skilled CNC machinists.

The HTTI teaches new machinists the advanced skills they need to join the Hypertherm team, while also helping existing machinists advance their skills and careers.

## Geotechnical-Geothermal-Water Wells :



JOY 1 Geo  
Drilling Machine



JOY 2 Geo  
Hydraulic Drilling  
Unit



JOY 3 Geo  
Hydraulic Drilling  
Unit



JOY 4 Geo  
Hydraulic Drilling  
Unit



Geo Easy  
Static / Dynamic  
Penetrometer

## Drilling Piles and Rods :



JOY 2 P  
Hydraulic Drilling  
Unit



JOY 3 P  
Hydraulic Drilling  
Unit



JOY 4 P  
Hydraulic Drilling  
Unit



Drilly  
Drilling Machines  
remote controlled

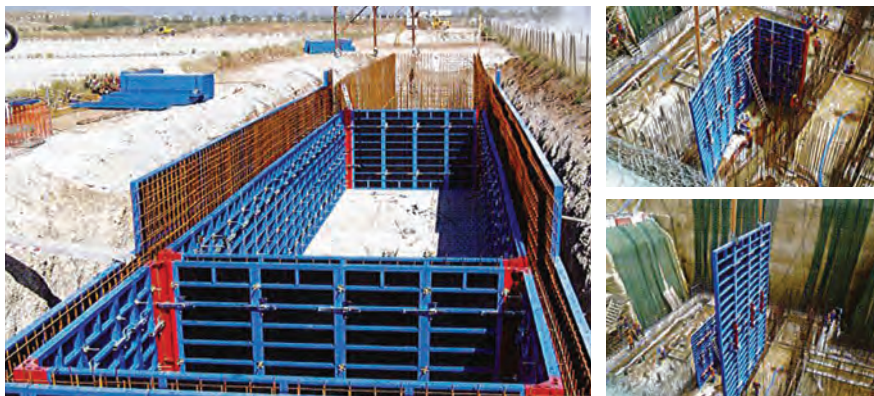


**GPrandina**

**7**

**Products :**

**> GP-10 Wall System**



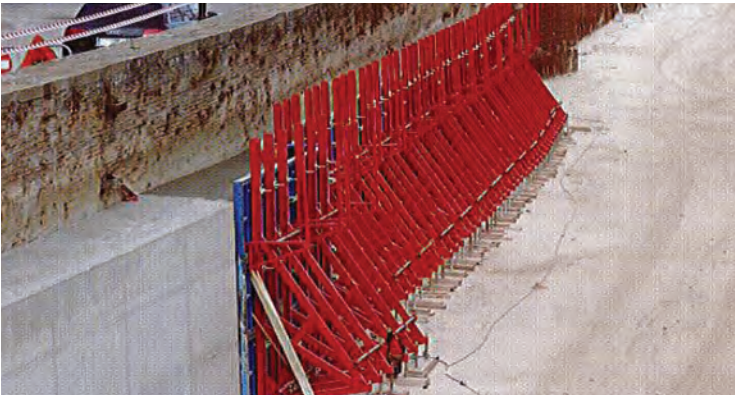
Water purification plant, Al khore, Doha, Qatar

**> GP-10 Pillar System**



Private building site, Turin, Italy

## > Single Side Wall System



Public building site, Battaglia Terme, Italy

## > Circular system



Public building site, Minsk, Belarus

Private building site, Como, Italy

## > Floor System



Public building site, Bellinzona, Switzerland

**GPRANDINA**  
BUILDING SYSTEMS SINCE 1965



**Hypertherm**

**8**

First-time visitors to Hypertherm’s U.S. headquarters often compliment us on our manufacturing operations.

They note how clean and well-organized our production facility is, and how we carefully assemble and test our products to ensure compliance with every engineering specification. And if they look closely, they’ll also notice that those specifications are as rigorous as they come – for example, Hypertherm consumables are machined within process control limits eight times tighter than the diameter of a human hair.

This level of manufacturing performance doesn’t happen by accident.

We are zealous advocates of LEAN and Six-Sigma methodologies.

A team of Six-Sigma black and green belts continuously works to drive improvements across our organization, looking for ways to optimize our manufacturing process, make our products better, and pass the savings on to our customers.

The promise of world-class manufacturing extends to the Hypertherm Technical Training Institute, a multi-million dollar training facility that addresses the need for skilled CNC machinists.

The HTTI teaches new machinists the advanced skills they need to join the Hypertherm team, while also helping existing machinists advance their skills and careers.



**Hypertherm®**





## NED Generators

9

NED specializes in the design and manufacture of generators of high quality, with excellent mechanical and acoustic.

Taking care of internally the whole production process, from design to testing of generators, NED promptly respond to specific needs of each customer with a company streamlined and efficient in its organization.

NED has a manufacturing plant of 2,500 m<sup>2</sup>, equipped with the latest technologies: laser cutting and folding, electrostatic painting, highly resistant polyurethane powder coatings, are just some of the other elements that characterize excellence NED.

NED manufactures generators designed to meet all expectations, thanks to its qualified technical staff and its industrial capabilities.

## Products :

- > LIFE70 - SOUNDPROOF 70db(A)
- > HUSH55 - SOUNDPROOF 55db(A)
- > BRAVE - FROM 400 KVA TO 2000 KVA OF POWER
- > STING - LIGHT TOWERD
- > ALUMINIUM - ALUMINIUM STRUCTURE AND SOUNDPROOFING
- > SHELTERS - FOR PHOTOVOLTAIC





**Syscomak**

**10**

Syscomak is a leading company in the field of the weighing systems for heavy equipment.

### **Products :**

- > MAXILOAD ET - onboard weighing system
- > MAXILOAD EVO - onboard weighing system
- > MAXILOAD HD - onboard weighing system





**UNIC Cranes  
Europe**

**11**

UNIC Cranes Europe, as part of the GGR Group, offers a complete range of mini crawler cranes to hire or buy – the perfect lifting equipment wherever access is restricted or working space is confined.

Our mini cranes have the flexibility and capabilities to assist in a huge variety of lifting situations from internal lifting through to waterway and railway track maintenance. We provide heavy lifting equipment, ideal for confined space working.

UNIC Cranes' mini cranes are specialists in lifting heavy items ranging from generators to grave stones and everything else in between.

Whether you require lifting equipment for a one-off lift, or for a number of projects, UNIC Cranes Europe offers mini cranes for sale as well as mini crane hire.

We don't just supply ground-breaking technology; UNIC Cranes also offers expert technical advice.

## Products :

- > UNIC URW-094 SPIDER CRANE
- > UNIC URW-095 SPIDER CRANE
- > UNIC ECO-UNIC SPIDER CRANE
- > UNIC URW-245 SPIDER CRANE
- > UNIC URW-295 SPIDER CRANE
- > UNIC URW-376 SPIDER CRANE
- > UNIC ECO-376 SPIDER CRANE
- > UNIC URW-506 SPIDER CRANE
- > UNIC URW-547 SPIDER CRANE
- > UNIC URW-706 SPIDER CRANE
- > UNIC URW-706-2 SPIDER CRANE
- > UNIC URW-1006 SPIDER CRANE



**URW-094**  
0.995t x 1.5m



**URW-095**  
0.995t x 3.5m



**ECO-UNIC**  
0.995t x 3.5m



**URW-245**  
2.4t x 1.5m



**ECO-UNIC**  
0.995t x 3.5m



**URW-295**  
2.9t x 1.4m



**URW-376**  
2.9t x 2.5m



**URW-506**  
3.0t x 3.4m



**URW-547**  
4.0t x 2.5m



**URW-706**  
6.0t x 3.0m

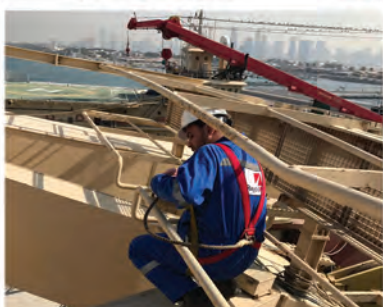
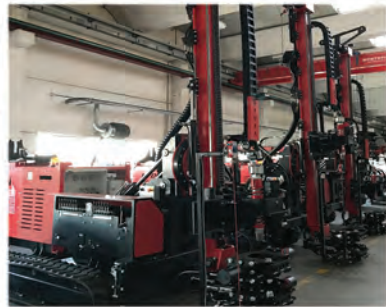


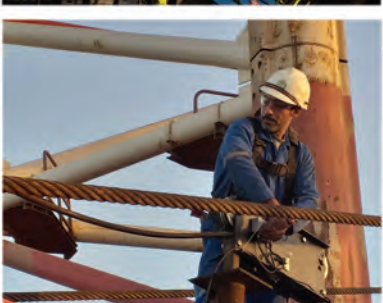
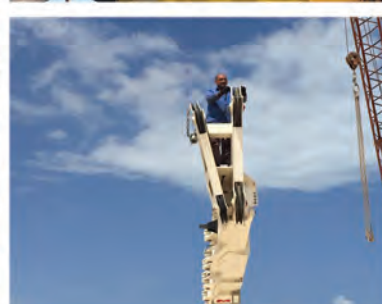
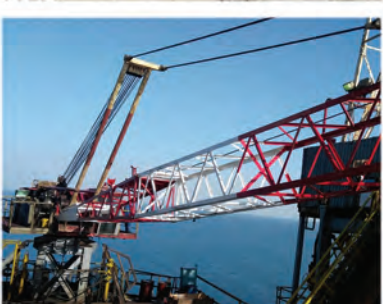
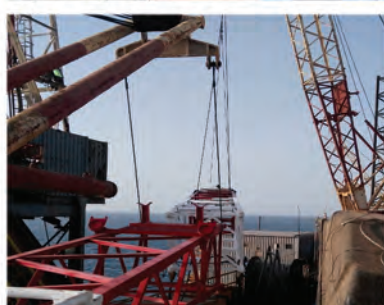
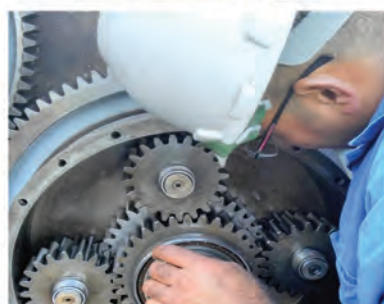
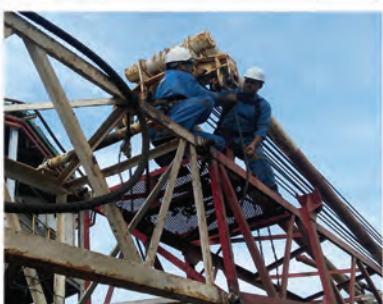
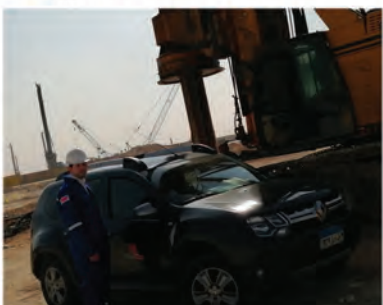
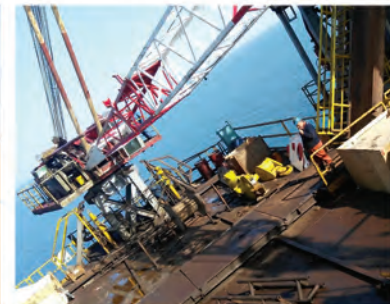
**URW-706-2**  
6.0t x 3.0m



**URW-1006**  
10.0t x 3.0m

# Degla Gallery







# NOTES :

---


A series of horizontal dotted lines for writing notes.



## Egypt Head Office Degla Engineering Co.

 3035 AlMearag City, Maadi, Cairo  
 (+202) 2447 3897  
 (+202) 2447 3895

## Saudi Arabia Office - Jeddah Degla Al Haditha Co.

 Office 12, Al Hada Center, Al Sharafeyah District, Jeddah  
 (+966) 12 612 1302 / +966 56 072 6192

## UAE Office - Dubai Lead Crane Heavy Equipment Spare Parts Trading L.L.C

 Office 401, Royal Concord Offices Tower, AlMaktoum Rd., Reggat AlButeen, Deira, Dubai  
 (+971) 04 267 3234 / (+971) 50 602 1995